

## CONFERENCE OBJECTIVES:

Upon completion, participants will be able to:

- 1) Compare and contrast Alzheimer's from other forms of dementia, and map the progress of Alzheimer's disease.
- 2) List four ethical principles for making tough decisions with family caregivers.
- 3) Describe the Tennessee's statewide network system for suicide prevention.
- 4) List reliable instruments used to diagnose mild and traumatic brain injuries.
- 5) Discuss the pharmacologic treatment of alcohol dependency.
- 6) List biopsychosocial factors that put people at risk for addictions.
- 7) Discuss how to treat Tardive Dyskinesia caused by antipsychotics


### **Registration and Cancellation:**

Registration includes CME/CEUs and lunch. A substitute may attend your place, as there is no refund 72 hours prior to the event. Although it has never occurred, the seminar planner reserves the right to cancel the event due to unforeseen circumstances, in which case you will be contacted and a full refund will be granted. For more specific information about the speakers and outline, please call 615-269-5355. or 615-963-3184.

## **SPECIAL THANKS TO OUR GENEROUS SPONSORS:**



Non-Profit  
Organization  
U.S. Postage  
PAID  
Nashville, TN  
Permit No. 1238

 **Mental Health Association**  
of Middle Tennessee  
295 Plus Park Blvd Suite 201  
Nashville, TN 37217

Meharry Medical College Department of  
Psychiatry and Behavioral Sciences  
- and -  
Mental Health Association of  
Middle Tennessee  
Present  
The 2nd Annual Lloyd C. Elam Symposium

## **REFLECTIONS & DIRECTIONS**



- ◆ Multidisciplinary Psychiatric Seminar
- ◆ Ethics      ▼ Suicide Prevention
- ◆ Healing Addictions ... and more

**March 25, 2011**  
**Meharry Medical College**  
S.S. Kresge Learning Resources Center

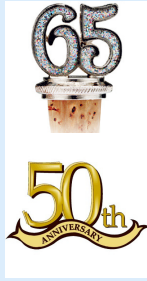
Registration Includes  
7.0 CME/CEU and Anniversary Lunch

Phone: (615) 963-3184

Fax: (615) 327-5661

## LANDMARKS IN MENTAL HEALTH

The Mental Health Assn of Middle TN will celebrate its 65th anniversary of promoting mental health through advocacy, education, and service. Founded in 1946, this agency has played a major role in starting TN Voices for Children, the Dede Wallace Center, Park Center, and the Crisis Intervention Center, and more.



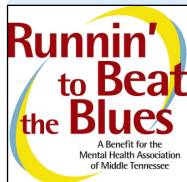
Meharry Medical College, a historically Black college, has a leading Department of Psychiatry and Behavioral Sciences that has been meeting the needs of the community for 50 years. Former Meharry President, the late Lloyd C. Elam, MD, was the founder of the department in 1961, and the mental health center bears his name.

### GENERAL CONFERENCE OUTLINE (7.0 HRS)

|             |  |
|-------------|--|
| 7:30-8:00   | Registration   |
| 8:00-8:30   | Welcome and Opening Remarks                            |
| 8:30-9:30   | Depression, Dyskinesia, & Dementia                     |
| 9:30-10:30  | Soldiers: Traumatic Brain Injury                       |
| 10:30-10:45 | Break  |
| 10:45-11:45 | Focus on Healing Addictions                            |
| 11:45-1:15  | Anniversary Celebratory Lunch with Dr. Bankole Johnson |
| 1:30-2:30   | Identifying Dementia in Primary Care                   |
| 2:30-3:30   | Suicide Prevention in Tennessee                        |
| 3:30-3:3:45 | Break  |
| 3:45-4:45   | Ethics: Tough Decision-Making                          |

### **Run For Mental Health & Wellness on March 26**

Register now for the 5K or 1-mile run/walk on Saturday, March 26 at 7am. Managed by the Nashville Striders, this USATF certified 5K and 1 Mile course benefits the Mental Health Assn. It is held at Nashville's Centennial Park near Vanderbilt. All Runnin' registrants get a t-shirt, goody bag, fun time, & chance to win medals and cash prizes. Over 500 runners & walkers attend! For detail information contact Nadine at (615) 269-5355; or go to [ichope.com/events.htm](http://ichope.com/events.htm).



## SPEAKERS AT A GLANCE:

**Bankole Johnson, MD, PhD**, Alumni Professor and Chairman of the Department of Psychiatry and Neurobehavioral Sciences at the University of Virginia., Dr. Johnson's primary area of research expertise is the psychopharmacology of medications for treating addictions.

**Alan Lynch, MD**, is the Chief Medical Officer at the Mental Health Cooperative and a Clinical Assistant of Psychiatry at Vanderbilt University. He has also served as the Director for the National Association of State Alcohol and Drug Abuse Directors in Washington, DC.

**Peter Martin, MD**, is the Chief Psychiatrist of Vanderbilt's Addiction Ctr, is listed as one of America's Top Psychiatrists, is an Assoc. Editor of Current Molecular Medicine, and on the editorial board for seven other journals.

**James Powers, MD**, is the Geriatric Medicine Program Director at Vanderbilt Medical Center, Chief of Geriatric Service and Intermediate Care at Nashville's VA Hospital, and on the Advisory Board for the Meharry Geriatric Education Center.

**Michael H. McGhee, MD**, Medical Director for Behavioral Healthcare Center of Clarksville, was Chief of neuropsychological services at Fort Campbell's Blanchfield Hospital where he served as Chief of the Behavioral Health Dept and regional consultant for TBI in the SE Medical Command.

**Scott Ridgway, MS**, is Executive Director for the Tennessee Suicide Prevention Network. He supervises the implementation of suicide prevention strategies and assists with postvention operations across Tennessee.

**Rev. James Vandiver**, is the CEO of the Resource Center on Aging and a minister at Harpeth Hills Church of Christ in Nashville, the former President of TN Assn of Homes and Services for the Aging, and former Director of LifeTrust America, a senior services and assisted living company.

### **Continuing Education (7.0 credit hours):**

**CME for Physicians:** Meharry Medical College is accredited by the American Council for Continuing Medical Education to provide continuing medical education (CME) for physicians. Meharry Medical College designates this live activity for a maximum of 7.0 AMA PRA Category 1 Credits™. Physicians should claim only the credit commensurate with the extent of their participation in the activity.

**Licensed Counselors: TLCPA** is an NBCC-Approved Continuing Education Provider (ACEPTM) and a co-sponsor of this program. TLCPA may award NBCC-approved clock hours for events or programs that meet NBCC requirements. TLCPA maintains responsibility for the content of this event.

**Social Workers:** This program has been approved by the National Association of Social Workers-TN Chapter for 7.0 continuing education units.

### Reflections and Directions: Mental Health Conference

March 25, 2011—Nashville, TN

**PLEASE PRINT:** One Registration Required Per Conference Participant

- Seminar + Lunch: \$75** (before 3/16)
- **Late registration: \$100** (after 3/16)
- Only Lunch (not seminar): \$25**
- Amount of Check Enclosed: \$** \_\_\_\_\_
- Make Checks to Meharry Medical College

**Mail registration with payment to:**

Ms. Julia Hamilton, MSW  
 ATTN: Conference Registration  
 Meharry Medical College—Dept of Psychiatry  
 1005 D. B. Todd Blvd  
 Nashville, TN 37208  
 Phone: (615) 963-3184 Fax: (615) 327-5661

Name: \_\_\_\_\_

Facility/Business: \_\_\_\_\_

Address: \_\_\_\_\_

City: \_\_\_\_\_ State: \_\_\_\_\_ Zip: \_\_\_\_\_

Phone: ( \_\_\_\_\_ ) \_\_\_\_\_ Email: \_\_\_\_\_

Your Profession (i.e., LCSW, Attorney, RN, etc): \_\_\_\_\_

**Registration includes CEUs and Lunch**

Payment Method:  Check  Visa  MasterCard  Discover

Card #: \_\_\_\_\_ Exp. Date \_\_\_\_\_

Signature: \_\_\_\_\_ 3-digit security \_\_\_\_\_

Please do not enclose cash.  
 Seminar is at: Meharry's Learning Resource Center, Lunch is at the West Basic Science Bldg  
**Don't forget to go to [ichope.com/events.htm](http://ichope.com/events.htm) to register for the 5K Run or 1-Mile Run!**